

FLOOR/WALL MOUNTED LIFEPO4 BATTERY DATASHEET (51.2V300Ah)

1、 规格 (Specifications)

2024. 04. 10

序号 No.	项目 Items	数值 Value	
1	电芯 Cell	3.2V 300AH	
2	组合规格 Pack Style	16S1P	
3	标称电压 Nominal Voltage	48V	
4	标称容量 Nominal Capacity	300Ah	
5	最小容量 Min Capacity	300Ah	
6	额定功率 Rated Power	15KWh	
7	充电电压 Charging Voltage	57.6V	
8	工作电压 Working Voltage	40V~58.4V	
9	循环寿命 Cycle Life	≥6000 times	
10	充电电流 Charging Current	标准充电电流 Standard Charge Current	50A (0°C~10°C)
		最大充电电流 Max Charge Current	200A (10°C~45°C)
12	最大持续放电电流 Max Continuous Discharge Current	200A	
13	内阻 Internal Resistance	≤100mΩ	
14	尺寸 Dimension L*W*H/mm	810*483*287 mm (不含接线 Excluding terminal blocks)	
15	约重 Approx. Weight	≈115Kg (估重 Estimating weight)	
16	工作温度 Operating Temperature	Charge	0°C~55°C
		Discharge	-20°C~60°C
17	存储温度 Storage Temperature	1 month	-0°C~45°C
		3 months	-0°C~35°C
		6 months	-0°C~25°C

2、Protection functions (保护功能)

电池内置保护电路模块(PCM), 保证电池充放电安全。

The battery is packed with the protection circuit module (PCM) , which can ensure the safety of this battery in charging and discharging.

PCM的主要功能如下:

The main functions of the BMS are as follows:

1) 过充保护

Over charge protection;

2) 过放保护

Over discharge protection;

3) 温度保护

Temperature protection;

4) 过流保护

Overcurrent protection;

5) 软件保护板, 带RS485/RS232/CAN通讯功能,支持最大15pcs并联使用, 支持对接逆变器通讯

Software protection board with RS485/RS232/CAN communication function, supporting up to 16pcs parallel use, and supporting communication with inverters

6) 带3寸蓝屏(按键屏), 带6A软开关

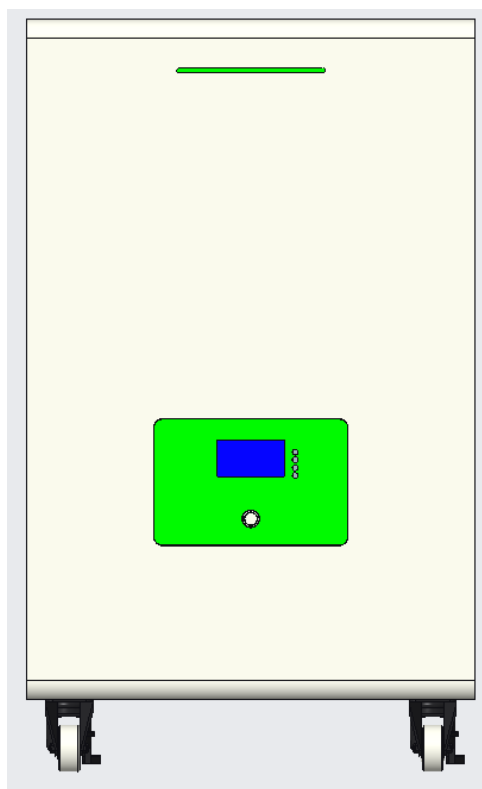
7) Equipped with a 3-inch blue screen (button screen), 6A soft switch

7) 200A贯穿式接线柱,

200A through type terminal,

3、Drawing (图纸)

外形尺寸 Dimensions: L810*W483*H287 mm



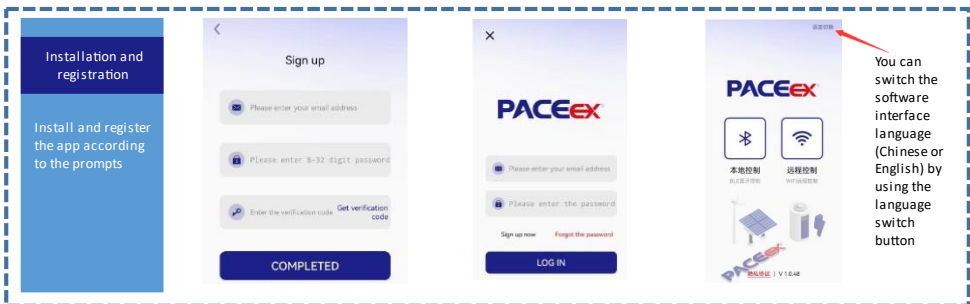
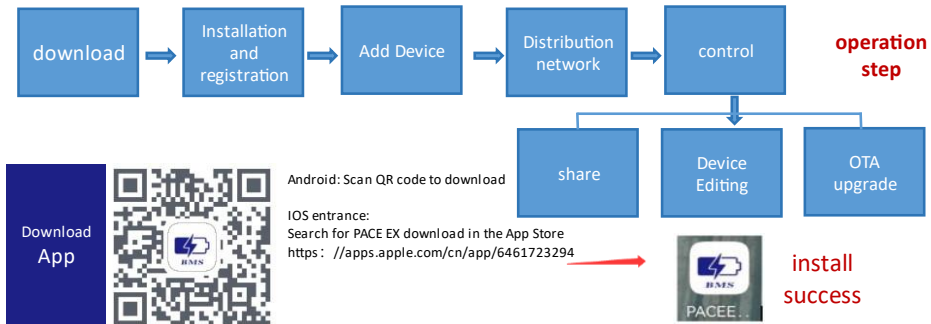
Bluetooth Function

Search PACEES BMS On the iPhone Store to

Download And Follow the next step

【Bluetooth WIFI operation guide for lowvoltage household storage】

Notes:
Attention: This manual is applicable to Peicheng low-voltage household storage Bluetooth WIFI and BMS motherboards with Bluetooth h WIFI modules; if you find any inconsistency between the product and the description in this manual during use, please refer to the actual product for accuracy



蓝牙

Local Control (BLE)
 When the device is in a work state, click the local control button to search for the device on the local control page. If a single or a small number of machines are running, you can directly click on the local run (Bluetooth) to discover and find the corresponding device for local control. Click on the device to enter the device control page



Local control
BLE bluetooth control



Remote control
WiFi remote control





PACK电芯个数		
1	3次	循环次数
36000AH	80000AH	90000AH
实际容量	额定容量	设计容量
700AH	800AH	80%
累计充电容量	累计放电容量	SOH
电芯电压		
1	15	3700mV
最高电压PACK	最高电压地址	最高电压
1	12	3200mV
最低电压PACK	最低电压地址	最低电压
电芯温度		
1	1	390.0
最高温度PACK	最高温度地址	最高温度
1	3	360.0
最低温度PACK	最低温度地址	最低温度

Device addition

Click "Add" and "+" to enter the search page and search for devices
Note: This step requires the phone to turn on the "Bluetooth", "Location", and "WiFi" functions, otherwise it will not be possible to complete Search and subsequent distribution network operations

Device addition

WiFi module returns to factory: The WiFi module returns to factory and puts the device in a discoverable state. Long press the reset button for 10-13 seconds, and the specific operation LED light display is as follows: Long press the button to make the water flow light run once. When all the lights are on for 5 seconds and then turn off, release the button

Distribution network

Turn on the "Bluetooth", "Location", and "WiFi" functions on your phone, otherwise you will not be able to complete the search and subsequent network operations



Note: The phone needs to be connected to the WiFi first, and the module only supports 2.4G WiFi

Device Editing and Sharing



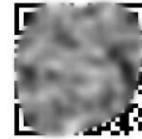
Long press the device item, and an edit menu will pop up at the bottom

Renaming: Changing device nickname for easy use

Delete: Unbind from device, scan the code again or add network configuration for next use

Sharing: When you are a device administrator (the account bound to the network for the first time), you can generate a QR code for the device for other users to scan and add.

20QxNv0tAS5ljt6B7yM



请使用"PACEEX BMS"APP扫码添加
提示: 请确保分享者与该账号在同一个地区

保存至相册

Equipment control and data display

The APP has completed the summary interface, including basic data, voltage and temperature, status data, historical data, parameter settings, device information, and general settings



OTA upgrade

The original design of the upgrade triggering strategy was for the APP to automatically identify whether an upgrade was needed based on the current software version number of the device. However, due to incorrect responses to MCU software version and other information, it was temporarily triggered by clicking on the device icon.

7.1: On the device list page, click on the device icon and a window will pop up for entering the firmware security code

7.2: Based on the security code entered by the user, pull the firmware information corresponding to the server and confirm the upgrade

